

Line bet.

292

Center of

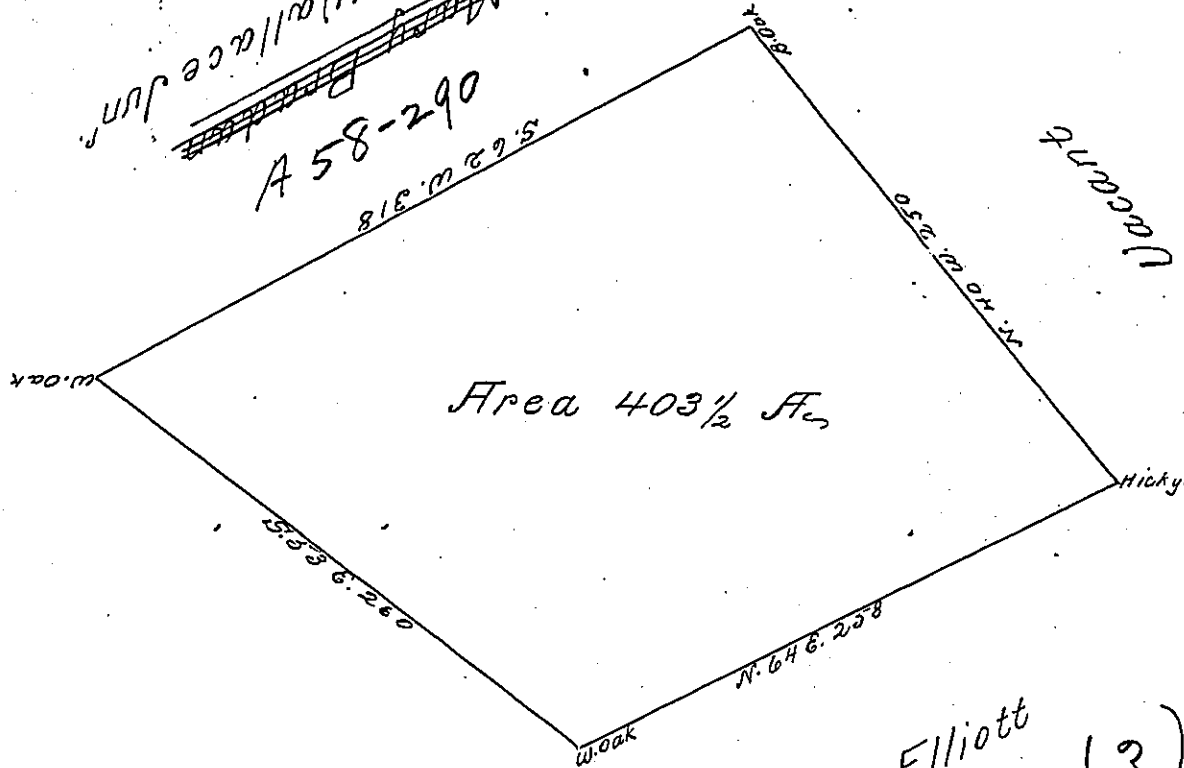
Hopewell

P-11-451

BEAVER

✓

~~George Wallace Junr~~
A 58-290



John Elliott
A 58-291 (?)

The above is a Draught of a Tract of Land situate in Robinson Township in the County of Washington made for Thomas Wallace in pursuance of a Warrant granted 26 November 1784 ^{8th April 1785} ^{located at Hopewell} containing 403 1/2 Acres with the usual allowance of 6 p cent for Highways &c

John Lukens Esqr. S. G. L.
David Redick Esq.

IN TESTIMONY that the above is a copy of the original remaining on file in the Department of Internal Affairs of Pennsylvania, made conformably to an Act of Assembly approved the 16th day of February, 1833, I have hereunto set my Hand and caused the Seal of said Department to be affixed at Harrisburg, this seventh day of November 1899

James W. Latta
Secretary of Internal Affairs.